

# EZITREE Plus

Family History Software

## Port Macquarie Users Group November 2012 - Newsletter #34

Rex and Yvonne Toomey PO Box 9206 Lighthouse Beach NSW 2444 Australia  
Phone (02) 6582 7702 Email: support@ezitree.com.au Web site: www.ezitree.com.au

---

Welcome to the final Port Macquarie Ezitree Users Group Meeting for 2012. Firstly, both Yvonne and I again want to thank everyone for coming along to these User Group sessions. It is most gratifying that so many of you give up your Saturday afternoon to be here as friends wanting to know more and share their experiences.

### Recent News:

#### State Records of New South Wales

The State Records website at <http://www.records.nsw.gov.au/> together with the Kingswood reading room will be closed all day Saturday 1st December 2012. This is because Endeavour Energy is re-tensioning high voltage cables nearby which will cut power to the Western Sydney Records Centre for the day. These closures may also occur on Saturday 15th December if poor weather on December 1<sup>st</sup> causes a delay to the work.

#### NSW Birth, Death and Marriage Index increased coverage.

Please remember that (hopefully) from the 1<sup>st</sup> January 2013 the NSW Births, Marriages and Deaths index will be extended forward one year so that you will be able to search the entries as follows: births 1788-1912, marriages 1788-1962 and 1788-1982.

It is easy to get a list of records from Ezitree with the names of people who fall within the increased search range years, that is, everybody born in 1912. Click the 'Basic' option on the Find menu pad and open the Find Basic window. Select the event code (births are '001', marriages '003' and deaths '008'), enter the state code of 'NSW' and put in a 'From Year' and a 'To Year' ('1912' for births, '1962' for marriages and '1982' for deaths).

Another, but more flexible way was detailed in the PM Ezitree Users Group Newsletter for May 2009 which can still be downloaded from [http://www.ezitree.com.au/PM\\_Newsletters/13-May2009.pdf](http://www.ezitree.com.au/PM_Newsletters/13-May2009.pdf).

#### Sandgate Cemetery On-line

Recently the Sandgate Cemetery located near Newcastle has put their 87,000+ cemetery records on the internet at <http://www.sandgatecemetery.org.au/> (alternatively, just Google 'Sandgate Cemetery'). It is actually called a 'virtual cemetery' and is a **major new resource** because they have not only provided a search facility with a location guide, but has also included photographs of the many thousands of monuments. Unfortunately, the down side is that you can only search by surname (not much fun with a name like 'Smith') and other search criteria such as year or grave site are also not supported.

#### Ancestry.Com – Taking over the world?

A few weeks ago, I noticed that Ancestry had put into its records the complete New South Wales Police Gazettes from 1854 to 1930 which has over 1.5 million names. Whilst this is a great new resource for users of Ancestry it meant that some people who had purchased these wonderful records on CD some years ago have potentially been left with a white elephant.



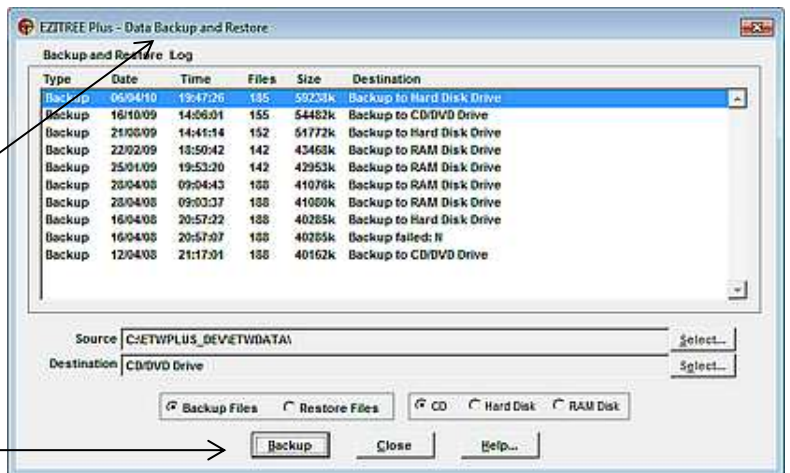


## Today's Quick Tutorial – Backup and Restore

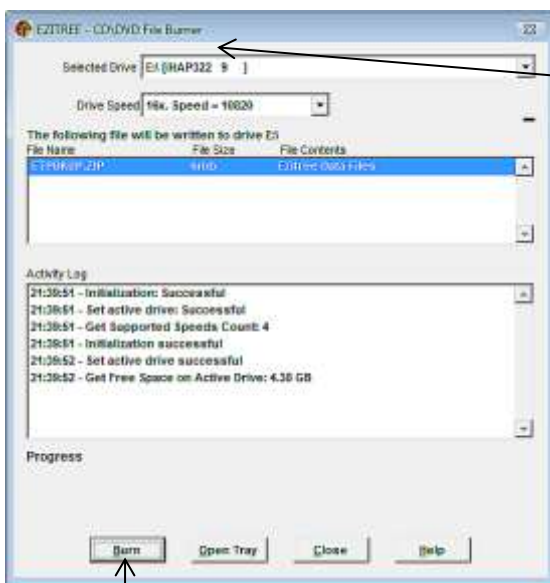
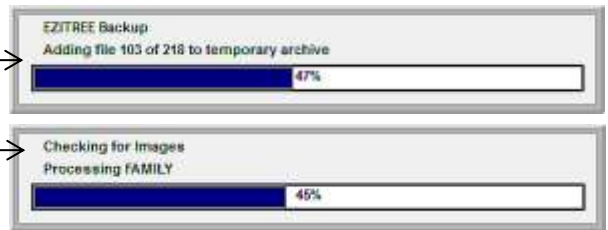
Why is backing up your data important? The reason is that computer hardware fails and generally when you least expect it. Sometimes the word 'Backup' can be scary. Some people may think that the Ezitree backup will take a long time. This is not the case because a recent backup of all my data and thousands of images took around five minutes.

To perform a backup, click the Utilities Menu item and select the Backup and Restore option which is second from the bottom.

This will open the Ezitree Plus – Data Backup and Restore window. You will find this window already set up for the backup process so that you can start the backup to a CD or DVD immediately. If you want to backup to a hard disk drive or flash drive, you need to select the appropriate option which is just over the [Help] button. When you are ready to start the backup, you should place a blank CD or DVD disk in the drive and click the [Backup] button.



The backup process involves creating a 'zip' archive of your data into a temporary folder called 'etpbkup.zip' which occurs when you see this progress bar on the screen. Once the data has been put into a 'zip' file, Ezitree checks for any image links and makes a count of the images. This occurs when you see this progress bar on the screen. When this count is concluded, it asks if you want to back up your images to the CD or DVD at the same time.



Finally, the Ezitree CD/DVD File Burner window will open and you must then click the [Burn] button at the bottom right of the window. 'burning' your files to the CD or DVD will now commence and should take no more than five minutes. Even less time will be required for small files.



Once the backup is done, the message will appear at the bottom of the window saying 'Burn is completed successfully'. Click the [Close] button to return to

the Backup window which will display the details of the backup just performed, such as file size and number of files included. Please note the number of files may vary depending on whether any temporary files are present during the backup process.

If you would prefer to undertake your own backup, there are two things to backup, firstly the folder and its contents named 'ETWDATA' and the folder structure(s) containing your actual images.

Thank you everybody for a wonderful year in 2012 and we look forward to an even better 2013.

*Rex and Yvonne Toomey*

