

EZITREE Plus

Family History Software

Port Macquarie Users Group

May 2012 - Newsletter #31

Rex and Yvonne Toomey PO Box 9206 Lighthouse Beach NSW 2444 Australia
Phone (02) 6582 7702 Email: support@ezitree.com.au Web site: www.ezitree.com.au

Welcome to the third Port Macquarie Ezitree Users Group Meeting for 2012. As in previous years, there will be no meetings over the winter months to give me time to recover and you time to get more family history research performed. The remainder meeting dates for 2012 are as follows:

22nd September 2012

27th October 2012

24th November 2012

Following the question and answer period today, I will be demonstrating how to create a web page with your Ezitree data. I will also go through the Quick Tutorial on page 2, which shows you how to find orphan or unlinked people in your files.

Recent News:

Ancestry.Com

It was pleasing to see that recent additions to the Ancestry collection includes records relating to immigration into Tasmania. These are 41,000 records from various registers and lists between 1841 to 1884; it often needs to be remembered that not everybody who went to Tasmania was a convict!

Ancestry also announced the addition of a new database containing baptisms, marriages, deaths and other miscellaneous records from Nonconformist churches in the West Yorkshire area. These include Baptist, Congregationalist and Independent, Moravian, Methodist, Inghamite, Quaker, and Presbyterian records, amongst others.

British Newspaper Archive

If you haven't heard about this new website by now, you probably have just returned from outer space! This wonderful new internet source is giving people all around the world direct access to the vast newspaper collection of the British Library. Recently, BrightSolid who are undertaking the digitising of the newspapers for the British Library introduced a new feature which I believe is most useful. It provides a listing of all the newspapers currently in the project and the year range they cover, plus they also provide a listing of newspapers added over the past 30 days. To open this new feature, click the option 'Show all titles' in the 'Search by newspaper' box. Because this site has thousands of newspaper pages added each day, if you haven't been able to find mention of your ancestor in the past, you may care to go back and re-search the archive. A check of the recent titles may also give a hint that a particular newspaper from your area of interest is now available to search.

Trove

Not to be outdone, the Australian National Library recently announced the following newspapers were added to Trove:

Queensland

- Chronicle and North Coast Advertiser (Qld. : 1903 - 1922)
- The North Queensland Register (Townsville, Qld. : 1892 - 1905)
- The Northern Mining Register (Charters Towers, Qld. : 1891 - 1892)
- Queensland Figaro (Brisbane, QLD : 1883 - 1885)
- Queensland Figaro (Brisbane, QLD : 1923 - 1936)
- Queensland Figaro and Punch (Brisbane, QLD : 1885 - 1916)
- Warwick Examiner and Times (St. Lucia, Qld. : 1867 - 1919)
- The Western Champion (Barcaldine, Qld. : 1922 - 1937)

Tasmania

- The Clipper (Hobart, Tas. : 1893 - 1909) Title funded by Tasmanian Archive and Heritage Office
- Zeehan and Dundas Herald (Hobart, Tas. : 1890 - 1922) Title funded by Tasmanian Archive and Heritage Office

FindMyPast

This Ancestry.com alternative recently added 3.5 million baptism, marriage and burial records from 1538 to 1911 for the Plymouth and West Devon area of England. They also said their website searching has been improved to conform more closely to other subscription websites such as Ancestry. I wonder how long it will be before these two companies merge together?

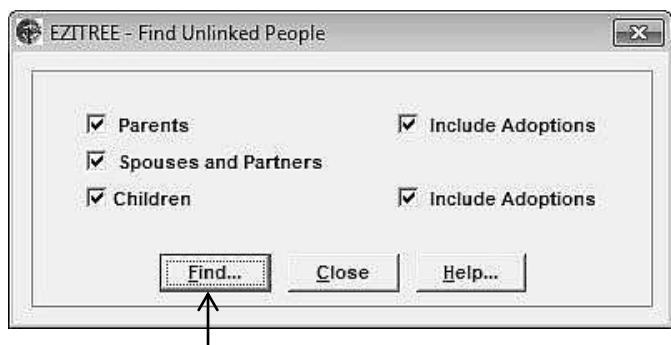
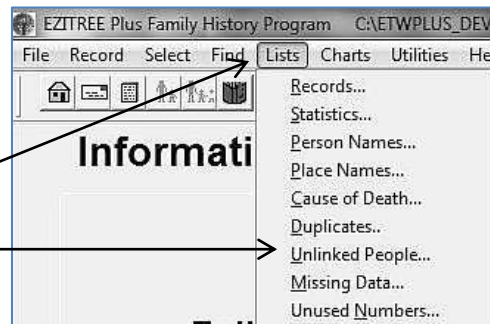
Today's Quick Tutorial – Unlinked or Orphan Records

Some family history software programs expect every person that is entered is linked somehow to every other person in the file. Ezitree does not do this because it wants to provide the flexibility of being able to use the program as the user sees fit. The program could actually be used to enter information about a disparate and unrelated group of people such as immigrants from a specific ship or maybe the entries from a funeral director's register.

However, for the traditional user who just wants to record their family history it may be very important to find records that were never linked in the first place or have become unlinked say, when a parent record has been deleted.

Please remember that missing links may NOT be an error because as mentioned above, Ezitree does not require everyone in the file to be linked to another person. However, if a person has been entered into Ezitree with the intention of linking them later, this option will allow that person to be found. This is where the Unlinked or Orphan Records list may come in very handy.

From the Ezitree main menu, click the 'Lists' menu pad and then click the 'Unlinked People' option.

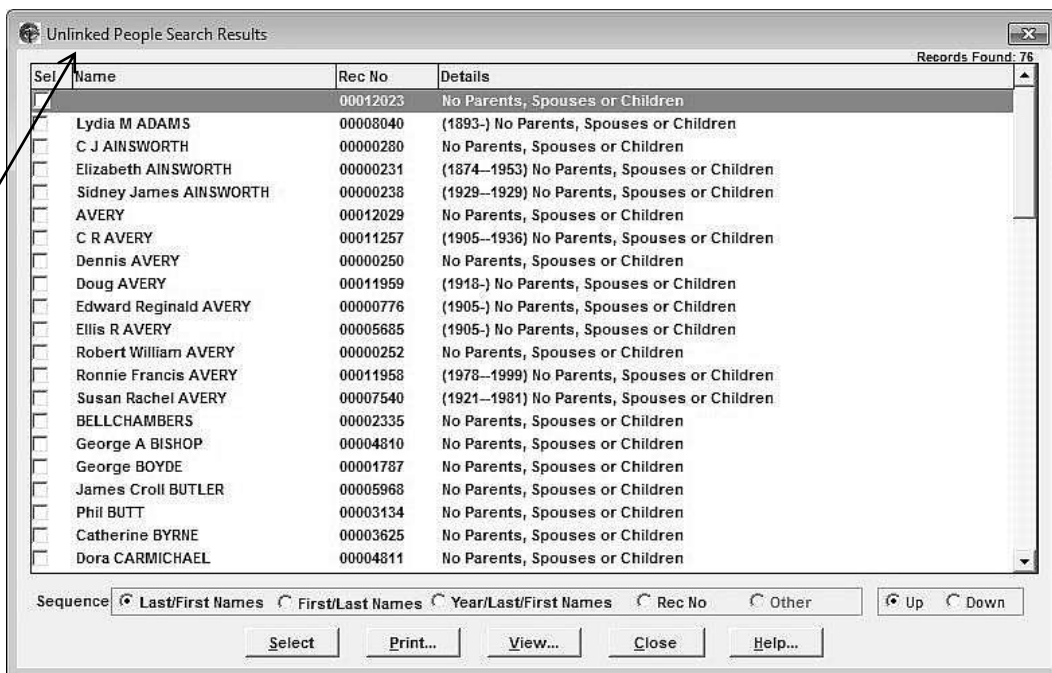


This will open the 'Find Unlinked People' options window. This window will always default to checking for missing links to parents, spouses and children and in most cases all of these options will be required. However, these options may be used individually or in any combination. For example, to only check for records that have missing links to parents, remove all the ticks except for the one to the left of the 'Parents' option.

Once the [Find] button is clicked, Ezitree will immediately commence the search for all records that match the criteria in the 'Find Unlinked People' options window.

The results of the search will be displayed in the 'Unlinked People Search Results' window as shown.

This window displays the names, record numbers and life span years of each person together with a notation of what type of link is missing in alphabetical sequence by last and first names. Use the 'Sequence' radio button to resort the list into other sequences such as first and last names, year and record number. Use the 'Up' and 'Down' option to alternate between ascending and descending order.



The other buttons offer the usual options for selecting and opening the particular record, displaying a list of the unlinked persons in the print preview window or viewing a list of the unlinked persons.

Hopefully, this brief discussion of the Unlinked Persons List will provide an insight into a rarely used but useful and at times important aspects of Ezitree that will help you manage the records in your Ezitree data files.

Rex and Yvonne Toomey